

5120 Bellefontaine Dr Ginormous gem in Arlington!



Reasons that you'll regret if you let this property pass...

Discover the remarkable features of this 5-bed, 3.5-bath home w two decks & a balcony overlooking a meandering creek & lush, wooded greenbelt. A top-to-bottom renovation has transformed this home, boasting LVP flooring, fresh paint, granite countertops, SS appliances, modern fixtures & lighting. Enter to see the stunning entryway w its soaring 18-ft ceiling, striking spiral stairs, & balcony overlooking this great space. Checkout the size of these rooms! Every room is spacious & inviting. Entertaining is effortless w a shaded 60-ft long deck just beyond the dining room, extending your living space into nature. The expansive living room w a cozy WBFP also leads to this delightful outdoor deck. The kitchen features SS appliances, granite countertops, island w a breakfast bar, an abundance of quality cabinetry, & pantry. It opens to both the breakfast & dining rooms. The primary bedroom & ensuite are a true retreat, complete w seating area. The ensuite bath boasts double sinks, tub, and separate shower. All bathrooms have been updated. With so many exceptional features, this property is an absolute must-see! Don't let the opportunity slip by to make this house into your dream home, where spaciousness, comfort, & fantastic lot & outside amenities converge for the perfect living experience!

Floorplan: 5 beds + 3.5 baths + 2 living areas + dining & breakfast + office area + two decks + 2-car gar. Two master beds & ensuites!

Other References:

- **Virtual Tour, Photos, 3D-walkthrough, & Features:** <https://www.seetheproperty.com/452256>

Exclusions & notes about conveyance: Furnishings including TV's & piano + refrigerator + washer & dryer; TV mounts will stay

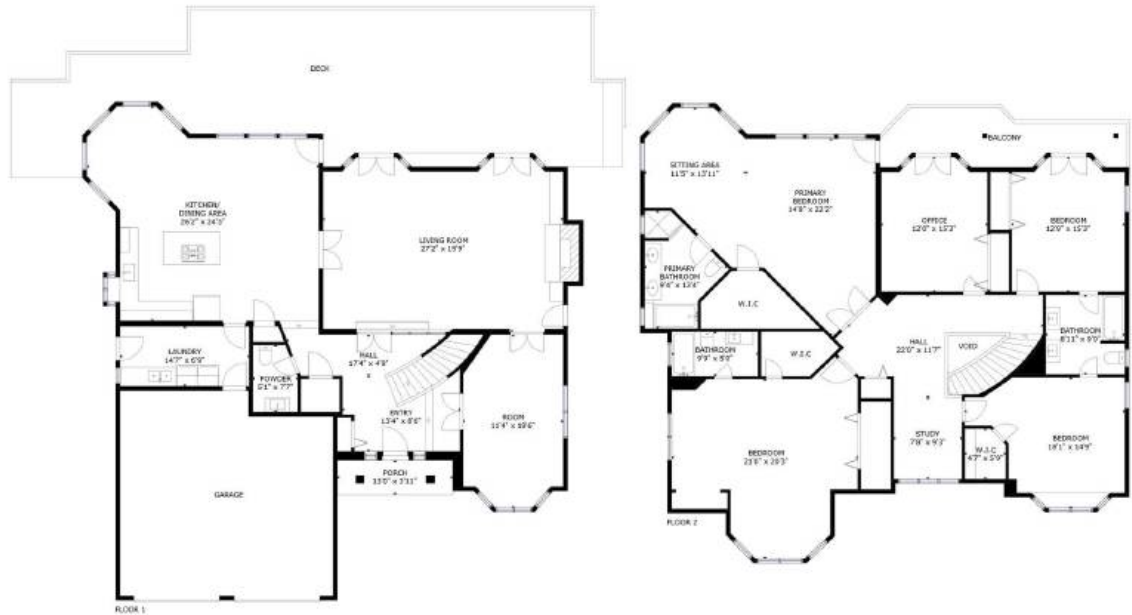


SCAN ME

Prime Location:

- [Arlington ISD](#) –schools; Moore Elementary; Boles Junior High School; Martin High School
- Mins from nearby entertainment, shopping, & restaurants such as [Lincoln Court Shopping Center](#)
- Nearby - [Cliff Nelson Recreation Center](#) & [Park](#); [Deaver Park](#) and Arlington is the home of such great venues as – [AT&T Stadium](#); [Globe Life Park](#); [Hurricane Harbor](#); [G-Flags](#);
- Minutes from American Airlines, Lockheed Martin, & many [other major employers](#) in the DFW/Arlington area
- Nearby access to Hwys: I-20, SH-287, I-820, Green Oaks Blvd

Floorplan:



Notable features*:

- Fantastic curb appeal with brick & siding home, fully guttered, landscaped front yard – just wait until you see the inside!
- Enter to see the striking spiral staircase with banisters, 18-ft ceiling, and overlooking balcony! Freshly painted, modern colors, décor, and new fixtures throughout. Wood-look LVP & tile flooring (all hard surface flooring)! Also, wood burning FP w/gas logs!
- Many rooms with bay windows (some with bench window seats) – lots of natural light
- Kitchen is open to the dining/breakfast and has granite counters, newer SS appliances (including refrigerator, range/oven, dishwasher, & garbage disposal), and breakfast bar – great for entertaining! Also, large, separate laundry/utility with shelving.
- All the bathrooms have been updated. The master bedroom/ensuite bath is huge, double vanities, tub & separate shower w/tile surround, plus large walkin closets!
- There is a second master bedroom/ensuite bath, also huge, and with 3 closets!
- Two balcony/decks [60x14 (grade level) & 30x8 (2nd level)] overlook a fantastic, wooded area and meandering creek; there's still room for play as well!
- Oversized 2-car garage with door opener; Fully guttered; irrigation system
- HVAC – Trane (5-ton) SEER 16/2020 & 2023; two 50-gal tank/gas/2008; roof 30-yr-dimensional - 2015; Windows – double pane
- SO many great features – gotta see it!

*buyer's and their agents need to verify all features, measurements, taxes, easements, & school info.

*Send
your
offer
today!*