

2016 Natchez Ave

Charming & Cozy in Bedford!



Description:

This super cute home located in Bedford – walking distance to Central Park (w Roy Savage Pool), Pennington Field, and a plethora of restaurants & entertainment near Central & Tx121. This home is move-in ready & just waiting for its lucky new homeowner to catch this one! Such a cozy & charming home w inviting features – upgraded bathroom features; kitchen open to living & dining while boasting tile counters, huge double sink, tons of cabinets w pulls; updated fixtures & gorgeous wood laminate flooring thru-out the hall, living, dining, & kitchen. Custom storage solution in MBed! New(er) SEER 14 AC R410-A (including ductwork & insulation); & new(er) vinyl low-e double hung windows. New Roof! Ceiling fans & window coverings thru-out. Gas furnace, water heater, & cooktop. Drink coffee & relax on the front covered porch or entertain on the covered back patio enjoying plenty of shade from the gorgeous large mature trees in the large grassy back yard.

Great (HEB ISD) schools! Don't miss this one!

Notable features:

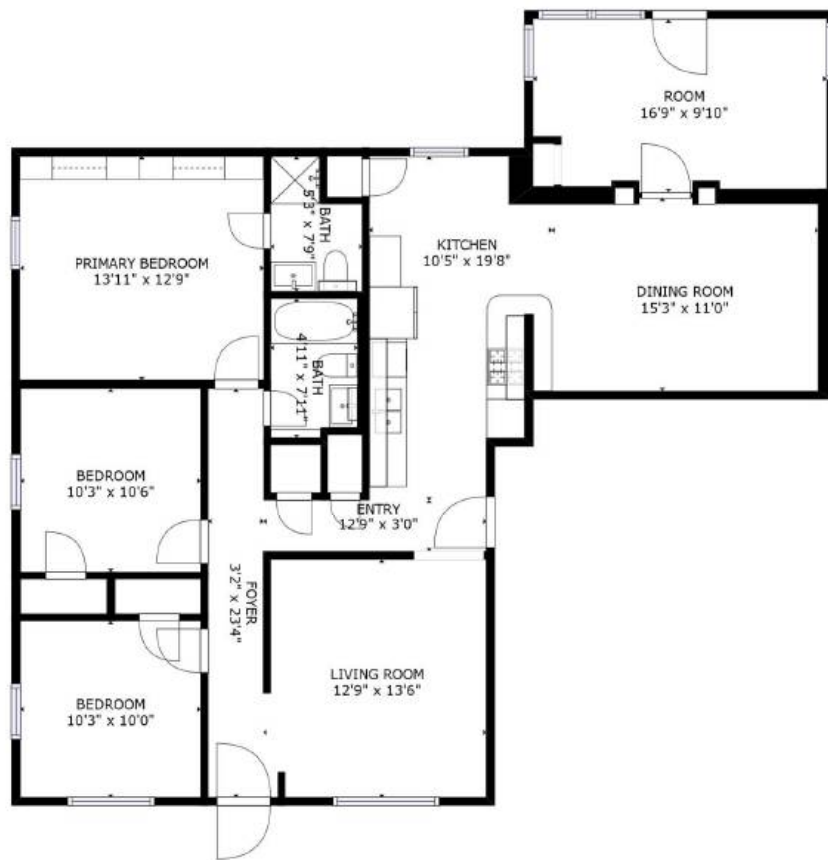
- Covered front porch facing North – a great place for cool mornings to sit and sip coffee
- Enter to find open floorplan with kitchen at the center of the living & dining
- Kitchen – Gorgeous laminate flooring, tile counters & backsplash, lots of cabinets with brush-nickel pulls
- Kitchen –appliances (dishwasher; refrigerator, gas oven/stove, microwave, garbage disposal)
- Kitchen – has breakfast bar which opens to dining area; pantry is in breakfast area
- Modern fixtures & neutral color scheme throughout; window blinds & ceiling fans throughout
- Flooring – tile in baths; wood-look laminate in kitchen, living, dining, hall; carpet in the beds & bonus room
- All baths have updated features – fixtures, vanities, cabinets, and lighting

- Master bedroom has ensuite bathroom and huge custom closet system with canned lighting
- Structural – new 30-yr/dimensional roof; HVAC / American Std – 4Ton - SEER 14/R-410A (very efficient); hot water heater is Bradford White 40-gal gas; vinyl double-pane/double hung – low e windows
- Sizable flex/bonus room – great for office, game or media room - leads to covered back patio
- Entertain on the cozy covered patio with large shaded backyard
- Garage has various cabinets & storage; pull down stairs & decked for storage above!

Other References:

- Virtual Tour, Photos, 3D-walkthrough, & Features: <https://www.seetheproperty.com/420055>
- 3D Walkthrough: <https://my.matterport.com/show/?m=sMj38MZxKJg>

Floorplan:



GROSS INTERNAL AREA
FLOOR 1: 1368 sq. ft
TOTAL: 1368 sq. ft

SIIZES AND DIMENSIONS ARE APPROXIMATE, ACTUAL MAY VARY.

FLOOR 1

 Matterport

Don't miss out on this one – send your offer today!